

Vision Problems in Ohio

The Prevalence and Cost of Vision Problems

Half of all blindness is preventable, but the number of Ohioans who suffer vision loss continues to increase. Because of the growth in the aging population, in 2020 there were 1,729,883 Ohioans affected by vision-robbing conditions. The primary causes are diabetic retinopathy, cataract, glaucoma and age-related macular degeneration (AMD).

Vision disability is one of the top 10 disabilities among adults 18 years and older, one of the most prevalent disabling conditions among children, and causes a substantial social and economic toll for millions of people including significant suffering, disability, loss of productivity, and diminished quality of life.¹

¹Centers for Disease Control and Prevention. (2020, June 9). *Fast Facts of Common Eye Disorders*. <https://www.cdc.gov/visionhealth/basics/ced/fastfacts.htm>



The Growth of Vision Loss in Ohio

Statistics from the 2020 *Vision Problems in Ohio* report indicate increases in the four leading causes of vision loss in Ohio since the 2014 report was issued.

- ◆ 97,870 people age 50 and older have age-related macular degeneration, a 10.5% increase
- ◆ 1,025,422 people age 40 and older have cataract, a 3.4% increase
- ◆ 294,742 people age 40 and older have diabetic retinopathy, a 3.5% increase
- ◆ 109,556 people age 40 and older have glaucoma, a 3.5% increase

Economic Impact of Vision Problems in Ohio

The estimated financial burden to the Ohio economy due to vision problems, refractive errors, visual impairment, and blindness for all age groups is \$6.1 billion annually. Direct costs of approximately \$2.9 billion include diagnosed disorders, medical vision aids, undiagnosed vision loss, aids/devices, education/school screening, and assistance programs. Indirect costs of approximately \$3.2 billion include productivity loss, informal care, long-term care, entitlement programs, tax deduction, and transfer deadweight loss (loss of economic efficiency when the optimal level of supply and demand are not achieved).



**\$6.1
Billion**

How to Use Vision Problems in Ohio 2020

VPOH 2020 is provided as an Ohio evidence-based resource for individuals and organizations to understand the scope and cost of vision problems to help guide health policy development/evaluation, target high risk populations, direct resources, and assist in community-based health services planning and implementation.

Sources for Vision Problems in Ohio 2020:

1. Abraham D. Flaxman, PhD. "Prevalence of Visual Acuity Loss or Blindness in the US", *JAMA Ophthalmology* (May 13, 2021). 2. David S. Friedman. 2012 Fifth Edition of "Vision Problems in the U.S." (June 2012). 3. Wittenborn, John S. & Rein, David B. "Cost of Vision Problems: The Economic Burden of Vision Loss and Eye Disorders in the United States." NORC at the University of Chicago. Prepared for Prevent Blindness America, Chicago, IL. (June 11, 2013). 4. U.S. Bureau Labor Statistics, *Consumer Price Index for medical care* (2013-2021). 5. U.S. Census Bureau *Estimates 2019*

Vision Problems in Warren County

Total Population⁵: 234,602



585 South Front Street
Suite 220
Columbus, Ohio 43215
1-800-301-2020
www.pbOhio.org

References: 1. Abraham D. Flaxman, PhD. "Prevalence of Visual Acuity Loss or Blindness in the US", JAMA Ophthalmology (May 13, 2021); 2. David S. Friedman. 2012 Fifth Edition of "Vision Problems in the U.S." (June 2012); 3. Wittenborn, John S. & Rein, David B. "Cost of Vision Problems: The Economic Burden of Vision Loss and Eye Disorders in the United States." NORC at the University of Chicago. Prepared for Prevent Blindness America, Chicago, IL. (June 11, 2013); 4. U.S. Bureau Labor Statistics, Consumer Price Index for medical care (2013-2021); 5. U.S. Census Bureau Estimates 2019

<http://www.visionproblemsus.org>
<http://cvph.preventblindness.org/the-economic-impact-of-vision-problems>

This publication is copyrighted. This sheet may be reproduced unaltered in print for educational purposes only. The Prevent Blindness, Ohio Affiliate name, logo, telephone number, and copyright information may not be omitted. Any other use of this information is not permitted without written consent.

Vision Problems in Ohio 2020 provides the evidence that vision disorders and impairment are major public health problems for Ohio. This county-specific data helps those caring for the visual health and well-being of Ohioans at the community level to understand the scope and cost of vision problems to establish sound policies and interventions that can help Ohioans enjoy good sight for life.

Without early detection of eye diseases in children, families and older adults, Ohioans suffer from critical impact on their quality of life and ability to maintain independence.

Healthy vision has a critical role in every child's physical, cognitive and social development. An untreated eye condition like amblyopia (lazy eye) can lead to irreversible vision loss.

Gradual vision loss in older adults compromises their ability to conduct daily activities such as driving, walking, cooking, bathing and reading, thus reducing their independence. Glaucoma and diabetic retinopathy often produce no symptoms, and if left undetected and untreated, can lead to blindness.

Early detection of vision problems and uniform systems of accessible eye care for all Ohioans are critical components of an equitable health system that will lead to improvements in learning, socialization, job productivity, independence and quality of life.

Prevalence of age related Eye Disease in Warren County¹⁻²

Eye Diseases	Total	Male	Female	White	Black	Other	Hispanic
Hyperopia: Age 40+	12197	5002	7142	11937	176	490	145
Myopia: Age 40+	29167	13667	15469	28157	472	1482	422
Age-Related Macular Degeneration: Age 50+	1865	661	1186	1878	20	32	10
Cataract: Age 40+	20694	8348	12242	19602	461	869	263
Diabetic Retinopathy: Age 40+	5936	2871	3071	5311	184	324	184
Glaucoma: Age 40+	2211	876	1323	1802	120	143	33
Blindness: Age 40+	770	309	456	691	29	26	10
Visual Impairment: Age 40+	3309	1338	1959	2924	115	203	74
Total Cases	76,149						

The Economic Impact of Vision Problems in Warren County Totals \$122,407,369

The Economic Burden of Vision Problems ³⁻⁴	Ages 0-17	Ages 18-39	Ages 40-64	Age 65+	All Ages
Population ⁵	56774	61440	81443	34945	234602
Direct Costs*	\$4,610,064	\$6,687,413	\$21,145,757	\$23,515,131	\$58,544,131
Indirect Costs**	\$594,847	\$9,618,028	\$10,964,238	\$36,399,343	\$63,863,238
Total Costs	\$5,204,911	\$16,305,442	\$32,109,995	\$59,914,474	\$122,407,369

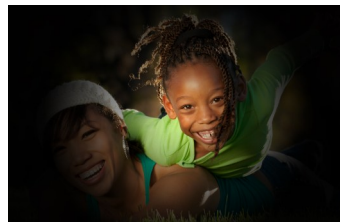
*Direct costs include medical, long-term care, aids/devices, education/school screening, and assistance programs.

**Indirect costs include productivity loss, nursing home care, informal care, etc.

Common Eye Diseases

Cataract

Blurry, hazy, multiple images, glare sensitivity, color perception loss, decreased night or low-light vision. More common after age 55.



Glaucoma

Side vision loss, tunnel vision, blurred central vision, seeing colored rings on lights. More common after age 40.

Age-Related Macular Degeneration
Central vision and color perception loss, distorted or fuzzy vision, difficulty with reading or facial recognition. Leading cause of vision loss for people 65 and older.



Diabetic Retinopathy

Patches of vision loss (floaters or blind spots), cloudy vision, glare sensitivity, decreased night or low-light vision. 40% of individuals with diabetes have diabetes-related retinopathy.