

## Vision Problems in Ohio

### The Prevalence and Cost of Vision Problems

**Half of all blindness is preventable**, but the number of Ohioans who suffer vision loss continues to increase. Because of the growth in the aging population, in 2020 there were 1,729,883 Ohioans affected by vision-robbing conditions. The primary causes are diabetic retinopathy, cataract, glaucoma and age-related macular degeneration (AMD).

Vision disability is one of the top 10 disabilities among adults 18 years and older, one of the most prevalent disabling conditions among children, and causes a substantial social and economic toll for millions of people including significant suffering, disability, loss of productivity, and diminished quality of life.<sup>1</sup>

<sup>1</sup>Centers for Disease Control and Prevention. (2020, June 9). *Fast Facts of Common Eye Disorders*. <https://www.cdc.gov/visionhealth/basics/ced/fastfacts.htm>



### The Growth of Vision Loss in Ohio

Statistics from the 2020 *Vision Problems in Ohio* report indicate increases in the four leading causes of vision loss in Ohio since the 2014 report was issued.

- ◆ 97,870 people age 50 and older have age-related macular degeneration, a 10.5% increase
- ◆ 1,025,422 people age 40 and older have cataract, a 3.4% increase
- ◆ 294,742 people age 40 and older have diabetic retinopathy, a 3.5% increase
- ◆ 109,556 people age 40 and older have glaucoma, a 3.5% increase

### Economic Impact of Vision Problems in Ohio

The estimated financial burden to the Ohio economy due to vision problems, refractive errors, visual impairment, and blindness for all age groups is \$6.1 billion annually. Direct costs of approximately \$2.9 billion include diagnosed disorders, medical vision aids, undiagnosed vision loss, aids/devices, education/school screening, and assistance programs. Indirect costs of approximately \$3.2 billion include productivity loss, informal care, long-term care, entitlement programs, tax deduction, and transfer deadweight loss (loss of economic efficiency when the optimal level of supply and demand are not achieved).



**\$6.1  
Billion**

### How to Use Vision Problems in Ohio 2020

VPOH 2020 is provided as an Ohio evidence-based resource for individuals and organizations to understand the scope and cost of vision problems to help guide health policy development/evaluation, target high risk populations, direct resources, and assist in community-based health services planning and implementation.

### Sources for Vision Problems in Ohio 2020:

1. Abraham D. Flaxman, PhD. "Prevalence of Visual Acuity Loss or Blindness in the US", *JAMA Ophthalmology* (May 13, 2021). 2. David S. Friedman. 2012 Fifth Edition of "Vision Problems in the U.S." (June 2012). 3. Wittenborn, John S. & Rein, David B. "Cost of Vision Problems: The Economic Burden of Vision Loss and Eye Disorders in the United States." NORC at the University of Chicago. Prepared for Prevent Blindness America, Chicago, IL. (June 11, 2013). 4. U.S. Bureau Labor Statistics, *Consumer Price Index for medical care* (2013-2021). 5. U.S. Census Bureau *Estimates 2019*

# Vision Problems in Mercer County

Total Population<sup>5</sup>: 41,172



585 South Front Street  
Suite 220  
Columbus, Ohio 43215  
1-800-301-2020  
www.pbOhio.org

**References:** 1. Abraham D. Flaxman, PhD. "Prevalence of Visual Acuity Loss or Blindness in the US", JAMA Ophthalmology (May 13, 2021); 2. David S. Friedman. 2012 Fifth Edition of "Vision Problems in the U.S." (June 2012); 3. Wittenborn, John S. & Rein, David B. "Cost of Vision Problems: The Economic Burden of Vision Loss and Eye Disorders in the United States." NORC at the University of Chicago. Prepared for Prevent Blindness America, Chicago, IL. (June 11, 2013); 4. U.S. Bureau Labor Statistics, Consumer Price Index for medical care (2013-2021); 5. U.S. Census Bureau Estimates 2019

<http://www.visionproblemsus.org>  
<http://cvph.preventblindness.org/the-economic-impact-of-vision-problems>

This publication is copyrighted. This sheet may be reproduced unaltered in print for educational purposes only. The Prevent Blindness, Ohio Affiliate name, logo, telephone number, and copyright information may not be omitted. Any other use of this information is not permitted without written consent.

**Vision Problems in Ohio 2020** provides the evidence that vision disorders and impairment are major public health problems for Ohio. This county-specific data helps those caring for the visual health and well-being of Ohioans at the community level to understand the scope and cost of vision problems to establish sound policies and interventions that can help Ohioans enjoy good sight for life.

Without early detection of eye diseases in children, families and older adults, Ohioans suffer from critical impact on their quality of life and ability to maintain independence.

Healthy vision has a critical role in every child's physical, cognitive and social development. An untreated eye condition like amblyopia (lazy eye) can lead to irreversible vision loss.

Gradual vision loss in older adults compromises their ability to conduct daily activities such as driving, walking, cooking, bathing and reading, thus reducing their independence. Glaucoma and diabetic retinopathy often produce no symptoms, and if left undetected and untreated, can lead to blindness.

Early detection of vision problems and uniform systems of accessible eye care for all Ohioans are critical components of an equitable health system that will lead to improvements in learning, socialization, job productivity, independence and quality of life.

## Prevalence of age related Eye Disease in Mercer County<sup>1-2</sup>

Eye Diseases	Total	Male	Female	White	Black	Other	Hispanic
Hyperopia: Age 40+	2100	867	1222	2212	4	22	14
Myopia: Age 40+	5021	2368	2646	5218	11	66	39
Age-Related Macular Degeneration: Age 50+	352	126	222	374	0	2	1
Cataract: Age 40+	3562	1447	2094	3632	10	39	25
Diabetic Retinopathy: Age 40+	1022	498	525	984	4	14	17
Glaucoma: Age 40+	381	152	226	334	3	6	3
Blindness: Age 40+	132	54	78	128	1	1	1
Visual Impairment: Age 40+	570	232	335	542	3	9	7
<b>Total Cases</b>	<b>13,139</b>						

## The Economic Impact of Vision Problems in Mercer County Totals \$21,482,154

The Economic Burden of Vision Problems <sup>3-4</sup>	Ages 0-17	Ages 18-39	Ages 40-64	Age 65+	All Ages
Population <sup>5</sup>	10664	10473	12536	7499	41172
Direct Costs*	\$865,888	\$1,139,973	\$3,254,831	\$5,046,215	\$10,274,333
Indirect Costs**	\$111,727	\$1,639,542	\$1,687,655	\$7,811,094	\$11,207,821
<b>Total Costs</b>	<b>\$977,615</b>	<b>\$2,779,515</b>	<b>\$4,942,486</b>	<b>\$12,857,308</b>	<b>\$21,482,154</b>

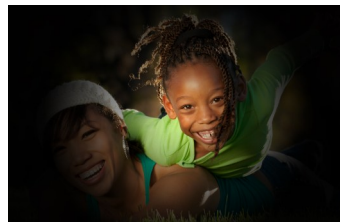
\*Direct costs include medical, long-term care, aids/devices, education/school screening, and assistance programs.

\*\*Indirect costs include productivity loss, nursing home care, informal care, etc.

## Common Eye Diseases

### Cataract

Blurry, hazy, multiple images, glare sensitivity, color perception loss, decreased night or low-light vision. More common after age 55.



### Glaucoma

Side vision loss, tunnel vision, blurred central vision, seeing colored rings on lights. More common after age 40.

**Age-Related Macular Degeneration**  
Central vision and color perception loss, distorted or fuzzy vision, difficulty with reading or facial recognition. Leading cause of vision loss for people 65 and older.



### Diabetic Retinopathy

Patches of vision loss (floaters or blind spots), cloudy vision, glare sensitivity, decreased night or low-light vision. 40% of individuals with diabetes have diabetes-related retinopathy.