

Vision Problems in Ohio

The Prevalence and Cost of Vision Problems

Half of all blindness is preventable, but the number of Ohioans who suffer vision loss continues to increase. Because of the growth in the aging population, in 2020 there were 1,729,883 Ohioans affected by vision-robbing conditions. The primary causes are diabetic retinopathy, cataract, glaucoma and age-related macular degeneration (AMD).

Vision disability is one of the top 10 disabilities among adults 18 years and older, one of the most prevalent disabling conditions among children, and causes a substantial social and economic toll for millions of people including significant suffering, disability, loss of productivity, and diminished quality of life.¹

¹Centers for Disease Control and Prevention. (2020, June 9). *Fast Facts of Common Eye Disorders*. <https://www.cdc.gov/visionhealth/basics/ced/fastfacts.htm>



The Growth of Vision Loss in Ohio

Statistics from the 2020 *Vision Problems in Ohio* report indicate increases in the four leading causes of vision loss in Ohio since the 2014 report was issued.

- ◆ 97,870 people age 50 and older have age-related macular degeneration, a 10.5% increase
- ◆ 1,025,422 people age 40 and older have cataract, a 3.4% increase
- ◆ 294,742 people age 40 and older have diabetic retinopathy, a 3.5% increase
- ◆ 109,556 people age 40 and older have glaucoma, a 3.5% increase

Economic Impact of Vision Problems in Ohio

The estimated financial burden to the Ohio economy due to vision problems, refractive errors, visual impairment, and blindness for all age groups is \$6.1 billion annually. Direct costs of approximately \$2.9 billion include diagnosed disorders, medical vision aids, undiagnosed vision loss, aids/devices, education/school screening, and assistance programs. Indirect costs of approximately \$3.2 billion include productivity loss, informal care, long-term care, entitlement programs, tax deduction, and transfer deadweight loss (loss of economic efficiency when the optimal level of supply and demand are not achieved).



**\$6.1
Billion**

How to Use Vision Problems in Ohio 2020

VPOH 2020 is provided as an Ohio evidence-based resource for individuals and organizations to understand the scope and cost of vision problems to help guide health policy development/evaluation, target high risk populations, direct resources, and assist in community-based health services planning and implementation.

Sources for Vision Problems in Ohio 2020:

1. Abraham D. Flaxman, PhD. "Prevalence of Visual Acuity Loss or Blindness in the US", *JAMA Ophthalmology* (May 13, 2021). 2. David S. Friedman. 2012 Fifth Edition of "Vision Problems in the U.S." (June 2012). 3. Wittenborn, John S. & Rein, David B. "Cost of Vision Problems: The Economic Burden of Vision Loss and Eye Disorders in the United States." NORC at the University of Chicago. Prepared for Prevent Blindness America, Chicago, IL. (June 11, 2013). 4. U.S. Bureau Labor Statistics. *Consumer Price Index for medical care (2013-2021)*. 5. U.S. Census Bureau *Estimates 2019*

Vision Problems in Clermont County

Total Population⁵: 206,428



585 South Front Street
Suite 220
Columbus, Ohio 43215
1-800-301-2020
www.pbOhio.org

References: 1. Abraham D. Flaxman, PhD. "Prevalence of Visual Acuity Loss or Blindness in the US", JAMA Ophthalmology (May 13, 2021); 2. David S. Friedman. 2012 Fifth Edition of "Vision Problems in the U.S." (June 2012); 3. Wittenborn, John S. & Rein, David B. "Cost of Vision Problems: The Economic Burden of Vision Loss and Eye Disorders in the United States." NORC at the University of Chicago. Chicago, IL. (June 11, 2013); 4. U.S. Bureau Labor Statistics, Consumer Price Index for medical care (2013-2021); 5. U.S. Census Bureau Estimates 2019

<http://www.visionproblemsus.org>
<http://cvph.preventblindness.org/the-economic-impact-of-vision-problems>

This publication is copyrighted. This sheet may be reproduced unaltered in print for educational purposes only. The Prevent Blindness, Ohio Affiliate name, logo, telephone number, and copyright information may not be omitted. Any other use of this information is not permitted without written consent.

Vision Problems in Ohio 2020 provides the evidence that vision disorders and impairment are major public health problems for Ohio. This county-specific data helps those caring for the visual health and well-being of Ohioans at the community level to understand the scope and cost of vision problems to establish sound policies and interventions that can help Ohioans enjoy good sight for life.

Without early detection of eye diseases in children, families and older adults, Ohioans suffer from critical impact on their quality of life and ability to maintain independence.

Healthy vision has a critical role in every child's physical, cognitive and social development. An untreated eye condition like amblyopia (lazy eye) can lead to irreversible vision loss.

Gradual vision loss in older adults compromises their ability to conduct daily activities such as driving, walking, cooking, bathing and reading, thus reducing their independence. Glaucoma and diabetic retinopathy often produce no symptoms, and if left undetected and untreated, can lead to blindness.

Early detection of vision problems and uniform systems of accessible eye care for all Ohioans are critical components of an equitable health system that will lead to improvements in learning, socialization, job productivity, independence and quality of life.

Prevalence of age related Eye Disease in Clermont County¹⁻²

Eye Diseases	Total	Male	Female	White	Black	Other	Hispanic
Hyperopia: Age 40+	10947	4403	6527	11374	72	145	85
Myopia: Age 40+	26177	12029	14137	26829	194	437	248
Age-Related Macular Degeneration: Age 50+	1767	618	1138	1853	9	13	7
Cataract: Age 40+	18572	7348	11188	18677	189	256	155
Diabetic Retinopathy: Age 40+	5327	2527	2807	5061	76	95	108
Glaucoma: Age 40+	1985	771	1209	1717	49	42	20
Blindness: Age 40+	691	272	416	658	12	8	6
Visual Impairment: Age 40+	2970	1178	1790	2786	47	60	44
Total Cases	68,436						

The Economic Impact of Vision Problems in Clermont County Totals \$107,707,131

The Economic Burden of Vision Problems ³⁻⁴	Ages 0-17	Ages 18-39	Ages 40-64	Age 65+	All Ages
Population ⁵	46859	55113	69546	34910	206428
Direct Costs*	\$3,804,997	\$5,998,706	\$18,056,835	\$23,491,579	\$51,513,405
Indirect Costs**	\$490,967	\$8,627,509	\$9,362,608	\$36,362,886	\$56,193,726
Total Costs	\$4,295,964	\$14,626,215	\$27,419,444	\$59,854,465	\$107,707,131

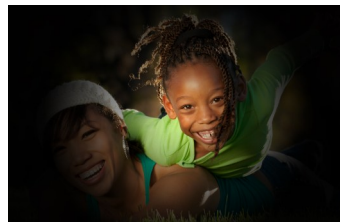
*Direct costs include medical, long-term care, aids/devices, education/school screening, and assistance programs.

**Indirect costs include productivity loss, nursing home care, informal care, etc.

Common Eye Diseases

Cataract

Blurry, hazy, multiple images, glare sensitivity, color perception loss, decreased night or low-light vision. More common after age 55.



Glaucoma

Side vision loss, tunnel vision, blurred central vision, seeing colored rings on lights. More common after age 40.

Age-Related Macular Degeneration
Central vision and color perception loss, distorted or fuzzy vision, difficulty with reading or facial recognition. Leading cause of vision loss for people 65 and older.



Diabetic Retinopathy

Patches of vision loss (floaters or blind spots), cloudy vision, glare sensitivity, decreased night or low-light vision. 40% of individuals with diabetes have diabetes-related retinopathy.